

## AXIAL FANS EP 40

### USE

The EP axial aspirator is suitable for the transport of dusty air up to a maximum temperature of 50 degrees C. Due to its plastic structure and the fan wheel, which is made entirely in resin, it is particularly suitable for use in premises with a high concentration of corrosive pollutants, such as cowsheds, breeding sheds, industrial units, etc.

### CHARACTERISTICS OF CONSTRUCTION

The fan wheel is made entirely in reinforced glass fibre resin; the high-yield wingshaped blades can be oriented when stationary.

The support structure is made in resin moulded in a single element. The protective grid conforms to safety regulations. The single-phase or three-phase airtight motor conforms to UNEL-MEC standards.

### ACCESSORIES

#### Gravity shutter:

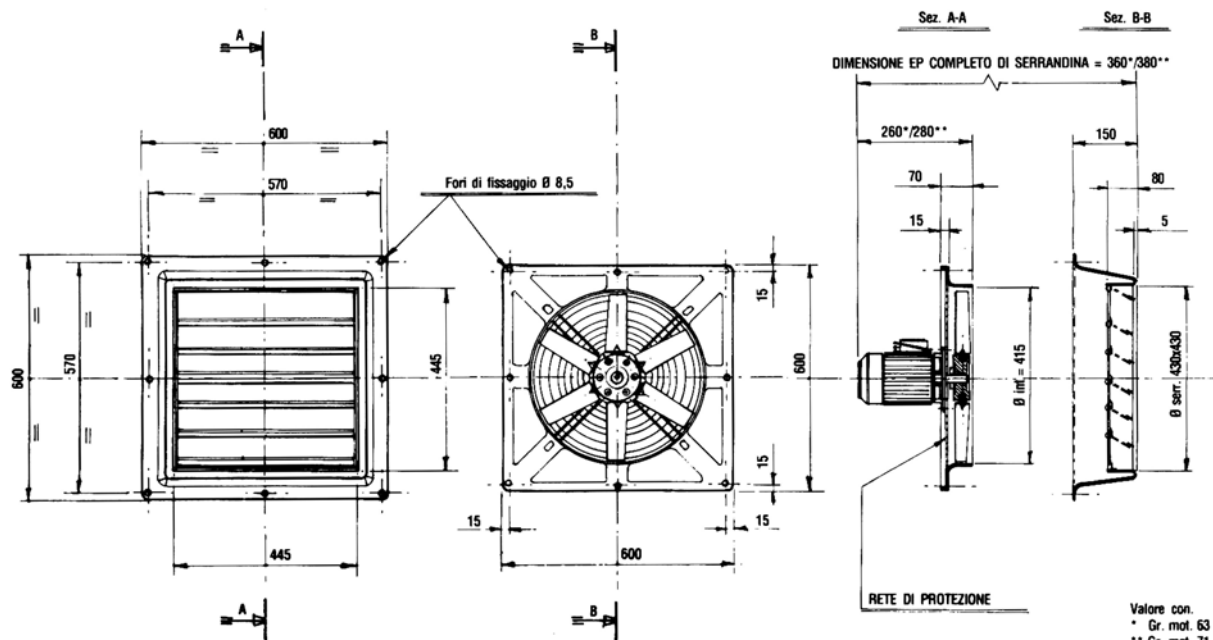
The flap-bearing structure is made in resin and moulded as a single piece.

The aluminium flaps are fixed onto to stainless steel rods with nylon bushings and self-locking rings.

The flaps are automatically opened by the airflow generated by the ventilator.

#### Speed adjustment switches:

It is possible to install a speed adjustment switch on ventilators with single-phase motors in order to adjust capacity.



### TECHNICAL DATA

Type	N° min <sup>-1</sup> Rpm	kW Installed	Volume m <sup>3</sup> /h	Lp dB (A)	Weight Kg
EP 40/2	2800	0,25	4500	87	6,5
EP 40/4	1400	0,12	3600	72	6,5
EP 40/6	900	0,09	2700	65	6,5